

KASON 201-BW

Inverted Metallurgical Microscope



View more information

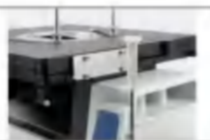
COMFORTABLE AND SIMPLE OPERATION

Low position operating knobs 360 degree rotatable viewing head, according with ergonomical design, reduce the fatigue from long-time use.



STABLE FRAME WITH OUTSTANDING DESIGN

Metal casting frame with corrosion and wear resistance technology, ensures a solid and durable microscope. Built-in magnet for hexagonal wrench keeping, small designs are the most practical.



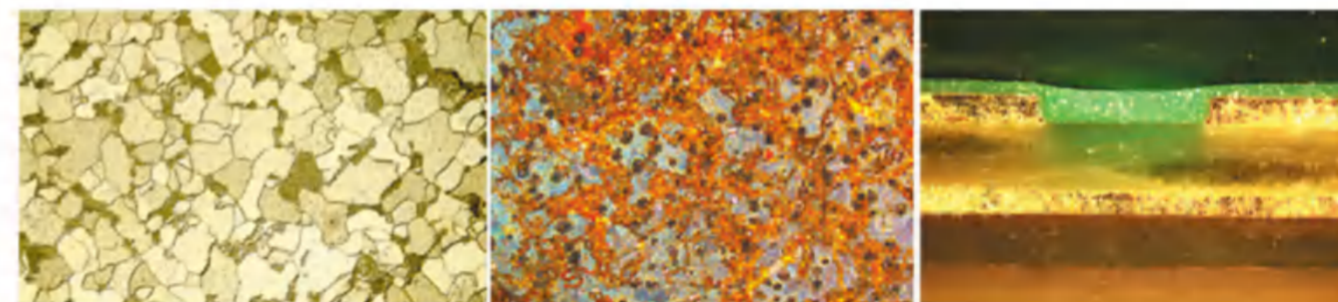
INTELLIGENT ECO SYSTEM

With environmental and economic ECO infrared sensing system, the microscope is preset to be shutdown when there is no operator within limited time.



FOR DIFFERENT OBSERVATION

Supporting for bright field, dark field, polarizing and differential interference contrast, KASON201-BW is applied for different researches.



MAIN SPECIFICATIONS

Item	Specification
Optical system	Infinity color correct optical system
Viewing head	45 degree inclined trinocular viewing head, 360 degree rotatable; interpupillary distance 50-75mm, binocular:trinocular=100:0 or 0:100
Eyepiece	High eye point wide field plan eyepiece PL10X/22mm, with adjustable diopter.
Objective	Long working distance bright & dark field plan achromatic metallurgical objectives 5X, 10X, 20X, 50X.
Nosepiece	Inward quintuple bright & dark field nosepiece (DIC slot), with built-in magnification sensor
Frame	Reflected frame low-position coaxial focusing system, coarse range 9mm (up 6.5mm, down 2.5mm), fine precision 0.002mm with upper limit and tension adjustment; with switch for bright and dark field; with variable field diaphragm and aperture diaphragm, both center adjustable; with slots for filters and polarizing kit; with light intensity indicator; with infrared induction; with magnification display
Illumination	External power adapter, input 100V-240V, output 15V13.4A, light intensity adjustable
Stage	Three layers rackless stage, size: 240mm (W) X 250mm (L), moving range: 50X 50mm; low-position handle knob
Polarizing assembly	Polarizer, fixed analyzer, 360 degree rotatable analyzer,
Camera adapte (Optional)	0.5X, 1X
Others (Optional)	DIC attachment, filters, high precision micrometer, Metallographic analysis software, 5 megapixel camera.