

KASONTTEST®

KASON
HUT126WG

1200kN



JINAN KASON TESTING EQUIPMENT Co, LTD.

www.sjlab.com

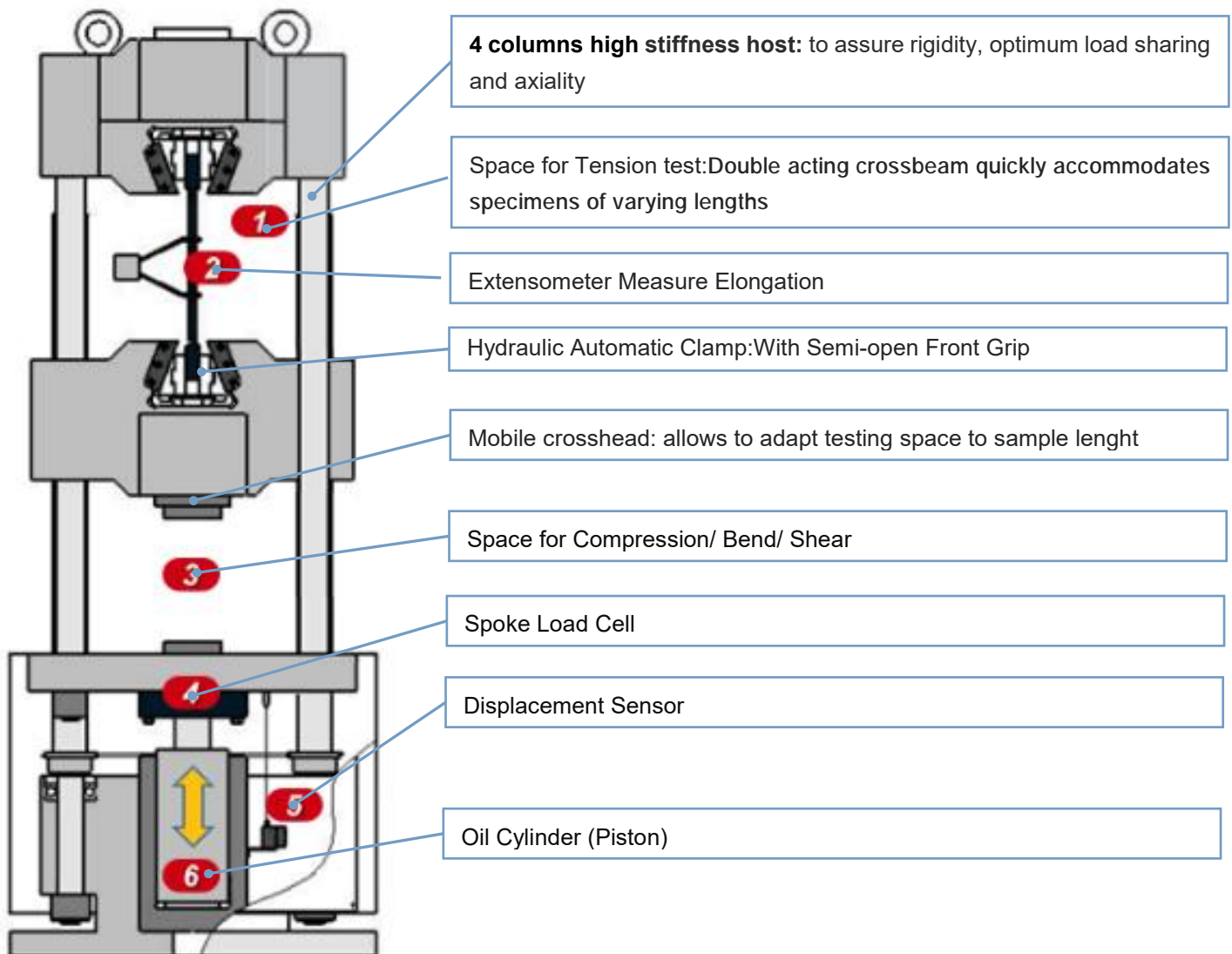
KASON HUT126WG Servo Hydraulic Universal Testing Machine

Introduction

HUT Series Computer-Controlled Servo-hydraulic Universal Testing Machine is suitable to test various metallic & non-metallic materials for tension, compression, bending and shearing testing.

Types of specimens and materials:

- Metals-(wire, rod, tube, strip, plate, strip) ;
- Fasteners (tensile, proof, single and double shear) ;
- Construction materials (reinforcement bar, wire, mesh, folding, compression of concrete and components),.etc.



Features

The heavy-duty six columns HUT SERIES is a kind of high precision material test equipment which adopts electro-hydraulic servo control technology, computer data acquisition and processing, which can realize closed-loop control and automatic detection of all the test parameters in real time.

- **Six-Column Frame:** Extremely rigid structure with large vertical clearance, perfect for tensile tests.
- **Servo-Hydraulic Control System:** Advanced technology for precise control of applied force.
- **High-Precision Load Cell:** Class 0.5 accuracy according to EN ISO 7500-1, ensuring accurate measurements up to 0.5% of the full scale.



Ad hoc designed half open jaws ensuring easy sample positioning



Metal Hand-held controller



Class 0.5 Accurate load cell

Rigid metal cover (available on request) to operate in total safe conditions

Main technical parameters

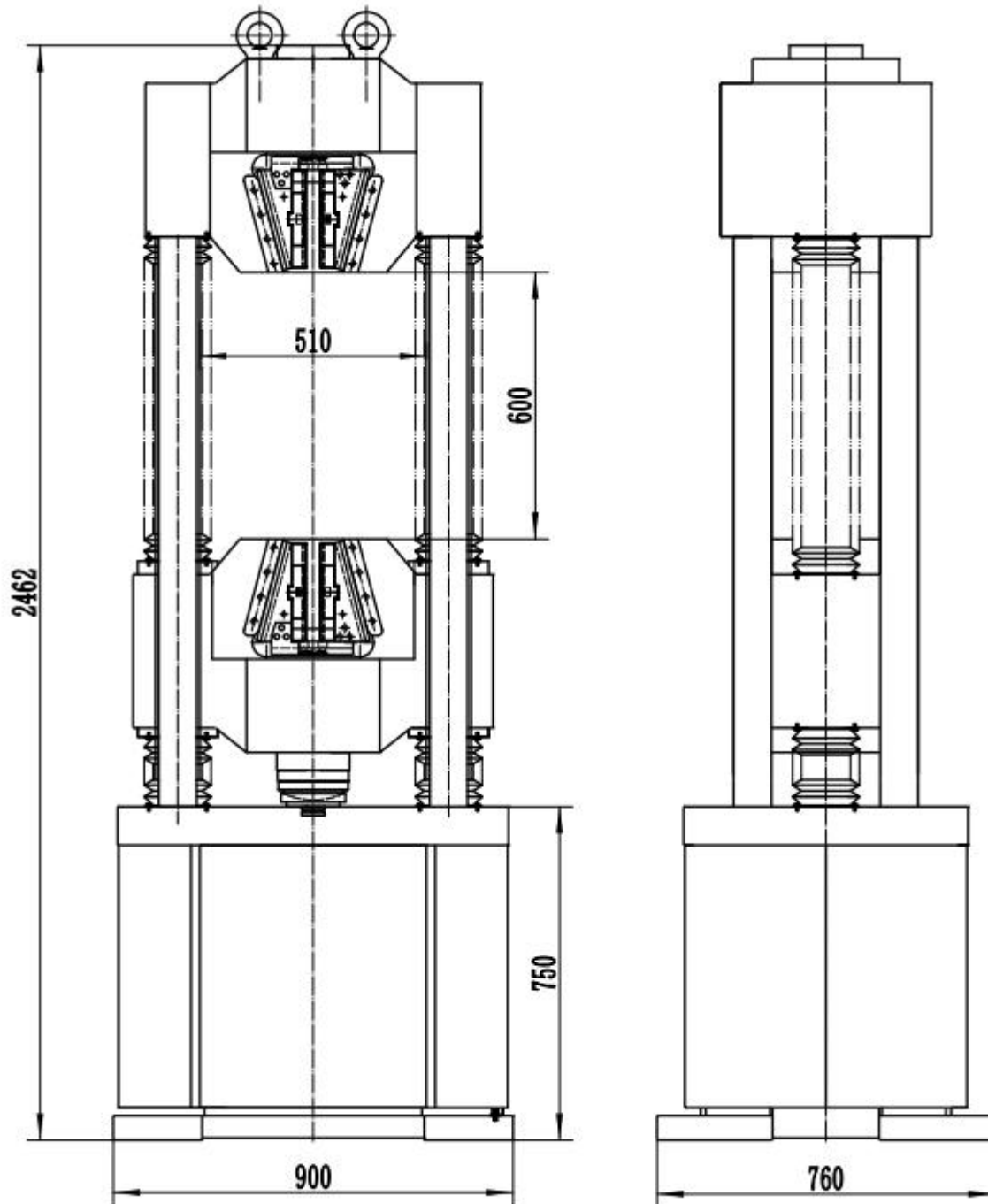
Model	KASON HUT126WG
Measurement Parameters	
Load Capacity	1200kN
Calibration standard	Class 0.5, ISO 7500
Testing load Accuracy	±0.5%
Load Measuring Range	2%~100%FS
Load Resolution	1/500,000 of FS
Displacement resolution	0.0025mm
Displacement accuracy	≤±0.5% of Indicating Value
Deformation measuring range	1%~100%FS
Deformation resolution	1/±500000FS of the max deformation
Deformation accuracy	≤±0.5% of Indicating Value
Overload Protection	≥5% of Full Range
Main frame parameters	
Max. Tensile Testing Space	680 (including the jaw clamping part 1080)mm
Max. Compression Testing Space	600mm (Including Compressionplate)
Distance between two columns	610mm
Column diameter	Φ85mm
Max. Piston stroke	250mm
Piston diameter	Φ250mm
Testing Speeds	85mm/min
Max speed of adjust the crossbeam	About 220mm/min
Cross beam moving motor power	0.4KW
Controls parameter	
Control mode	Force closed loop control, deformation closed loop control, displacement closed loop control
Force control controls the speed range	0.001%~5%FS/s
Force control controls the speed range	0.001%~5%FS/s
Force control speed control accuracy	When 0.001% ~ 1% FS/s is better than ≤± 0.5%; When 1% ~ 5% FS/s better than ≤± 0.2%
Force control hold accuracy	±0.002%F.S
Deformation control controls speed range	0.001%~5%FS/s
Deformation control accuracy accuracy	When 0.001% ~ 1% FS/s is better than ≤± 0.5%; When 1% ~ 5% FS/s better than ≤± 0.2%;
Deformation control hold accuracy	≤±0.002%F.S
Displacement control speed range	0.1~85mm/min
Displacement control speed accuracy	≤±0.2%
Displacement control hold accuracy	≤±0.02mm
Servo oil power system specifications	
Main system Max. pressure	25MPa
Max. flow	4L/min
Hydraulic integrated valve block	10μm, Includes precision oil filter

Oil pump motor	2.2KW
Plug-in valve	USA SUN
Oil tank capacity	60L
Accessory parameters	
Clamping mode	Built-in wedge type hydraulic automatic clamping
Overall dimensions of the jaws	120x100mm
Round specimen clamping range	Φ13-26, Φ26-45mm,Optional:Φ45-60mm
Flat specimen clamping thickness	0-20mm;Optional:20-40mm
Compression plate dimensions	Φ160mm
Dimensions and Weight	
Load frame dimension	900×760×2460mm
Oil power dimension	1200×680×750mm
Gross Weight(Host+oil source)	3500kg
Power supply	3 phase, AC380V±10%, 50Hz
Operating Temperature	0 to +38° C (+32 to +100° F)
Humidity Range	10% to 90% non-condensing

Note:







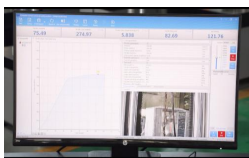



- *Extra wide and/or extra height frames are available.
- *Power supply system is completely customizable.
- *Tensile space, test width, and speed is completely customizable.

KASON reserves the right to modify the specifications described without prior notice.

Dimension drawing

Standard Accessories

NO.	Part Name	Picture	Part Name	Qty.
1.Machine Host				
1.1	Universal testing machine host		1200KN, Six columns (4 columns and 2 screws), High intensity testing machine structure and crosshead, high stiffness to assure accuracy;	1set
1.2	Hydraulic automatic Wedge tensile grip		Semi-open front hydraulic wedge clamps for easier loading and allowing rapid loading and unloading of specimens.	1set
			Round: $\Phi 13$ - $\Phi 26$; $\Phi 26$ - $\Phi 45$; Optional: $\Phi 45$ - $\Phi 60$ mm; Flat: 0-20; Optional: 20-40mm Width of Flat Specimens: 120x100mm	1set /each
1.3	Compression test attachment		Dimension: $\Phi 160$ mm	1set
1.4	Bending test attachment		Optional , Bending span: 450mm Roller diameter: $\Phi 30$ mm Max width of support roll: 160mm	1set
2.Servo oil power system				
2.1	Servo hydraulic station		Max. Pressure: 25MPa Power: 1.5KW Oil Tank Capacity: 60L	1set
2.2	Servo motor and drive system		1.5KW Ac servo motor pump, 1500Rpm	1set

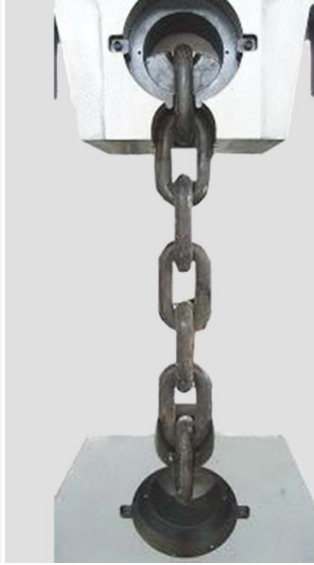
2.3	Plug valve		The US SUN Valve	1suit
3. Measurement and control part				
3.1	Load sensor		Class 0.5 Spoke sensor	1set
3.2	Digital displacement sensor		10000 wire , for the best positioning and measuring accuracy.	1set
3.3	Controller		KASON 550, Three closed loop (force, deformation, displacement) control system	1set
3.4	Monitoring system		provides a stable output power. When the power supply is abnormal(missing phase, wrong phase sequence, wrong wiring)the indicator light of the monitoring system will be off.	1set
3.5	Hand-held controller		Can control the rise and fall of moving beams and cylinders, clamping and loosening of jaws	1set
3.6	Measurement and Control Software		Standard English, Can optional English,Russia,Turkish, Spanish.,etc	1set
3.7	Computer and Printer		HP	1set
3.8	Electronic Extensometer KASON EX-50/10		Gauge Length: 50mm; Deformation: 10mm	1set
4. Other accessories				
4.1	L-shaped anchor bolt		Include the nut	4suit
4.2	Spare sealing element		Compound gasket,OR-GASKET-1SET	1suit

Other Optional Accessories

➤Grip of Chain



➤Grip of Chain



➤Grip for Fasteners (Bolt/Stud/Nut)



➤Grip for Welded fabric



➤compression grip



➤shear grip



➤bending grip



➤Four point bending grip



Software Instruction

Test process:

Selection a test--Enter the test scheme selection--Input the sample information--Start to test--end of the test

Features:

1. Full digital control

The whole measuring and control system adopts the special controller, which can achieve the digital adjustment of zero point and gain of load, deformation and displacement, and it's easy to operate and possesses the high reliability.

2.Possess the functions of storage, setting and loading for various kinds of parameters, which make it convenient to connect multiple transducers with one load frame.

3.Realize the close-loop control, and show the reference curve during the executive operator adjusting the close-loop parameters, so the user can observe the close-loop effect caused by the parameters.

4.Perfect graphic function to complete the functions of the reappearance, amplification, reduction, self-adaptation, lapping of the curves, display and print the curve at the appointed range, observe the coordinate of the test point.

5.Data processing supports automatic analysis and graphic man-machine mutual processing, which is convenient to check and compare the test results.

Multilevel identity management

Multilevel identity management, different identity has different functions, which not only makes the operation quick by ordinary operator, but also protect the system effectively.

6.Multi controlling channels: Displacement, force control, deformation, control, stress control, strain control, constant stress, constant strain etc.

7.Test standard: provide users with the necessary applications to the test, covering GB, ASTM, DIN, JIS, BS ... and other testing standard specification.

Multi measurement units

Load can be displayed in kN, lbf or kgf as selected by the operator.

8.Record video:

optional DV Customers can add cameras, the software has a recording function: can effectively record and play back the entire test experiment process

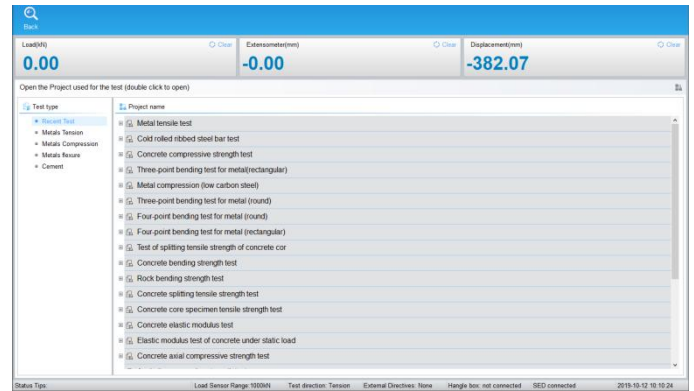


Fig.1 Test Selection Interface

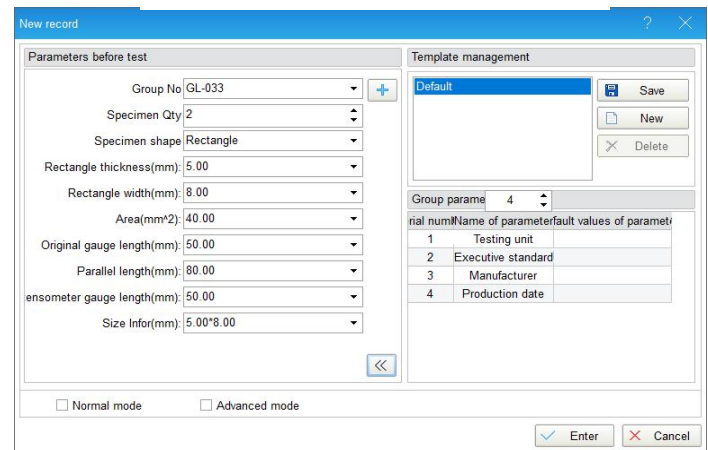


Fig 2. Input the sample information

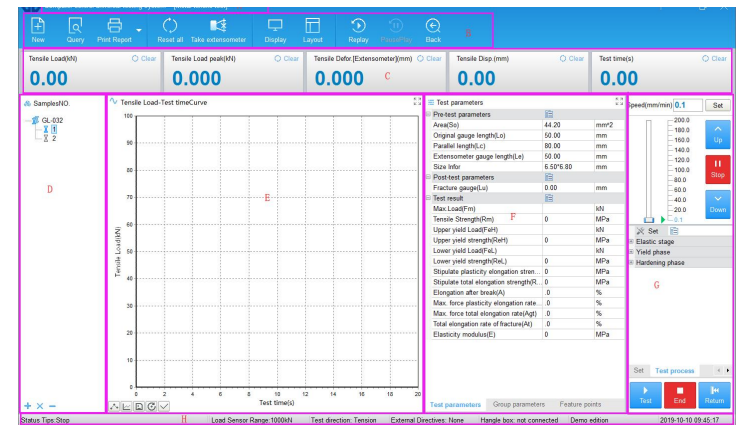


Fig 3. Start to test

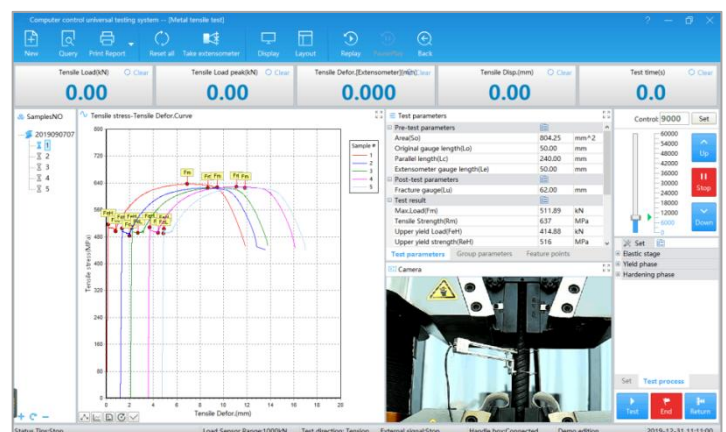
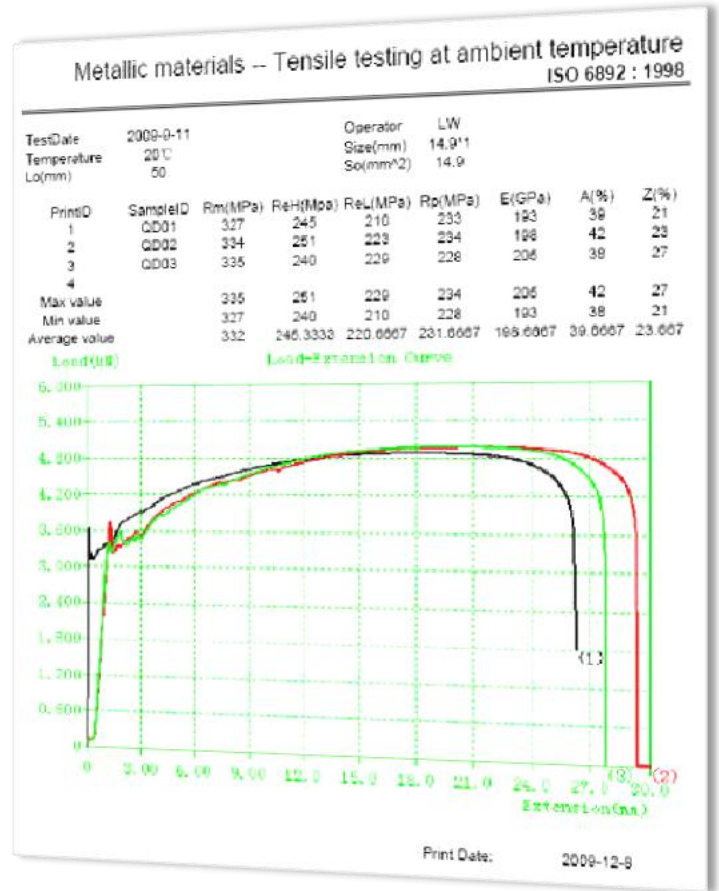
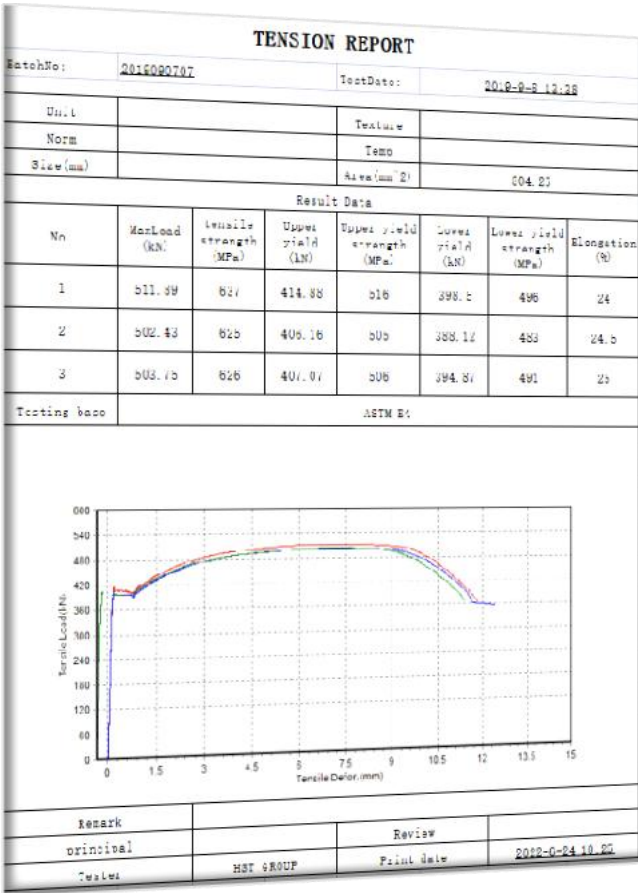


Fig 4. Record video

Test Report

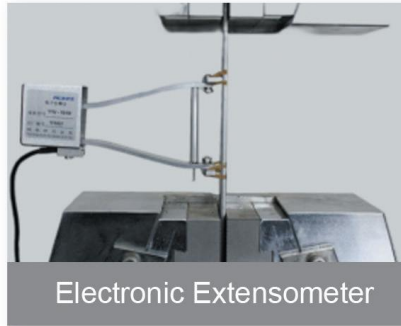
Output and print report: Excel, word, template test report, can be edited customize To show test information, including test person, test standard, test curve, test max load etccan add your company LOGO and company name,easy to edit.



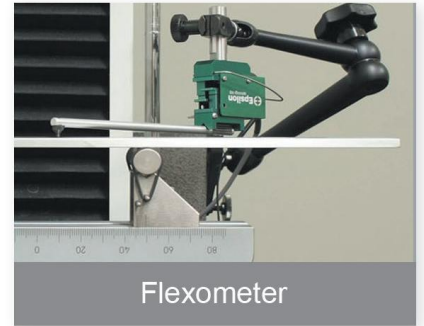
Optional Deformation Measurement



Epsilon Extensometer



Electronic Extensometer



Flexometer



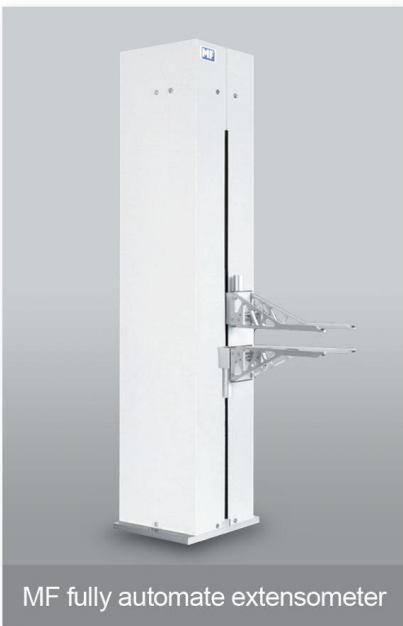
Video extensometer



MF High temperature extensometer



Epsilon high temperature extensometer



MF fully automate extensometer



Large deformation extensometer



Dial gauge

FOCUS IN MATERIAL TEST

KASONTTEST®

JINAN KASON TESTING
EQUIPMENT Co, LTD.

DuandianIndustrial Park , Jingshi Road, Jinan City,China.

P: +86 15910081986

E: amin@jnkason.com | **W:** www.syjlab.com

